



Integrated Solutions for

TRANSPORTATION MAINTENANCE

REDUCED TOTAL COST OF OWNERSHIP

- Enhanced Worker Safety
- Improve Operational Efficiency
- Increase Productivity



INTEGRATED SOLUTIONS

Industry leading technical expertise and comprehensive portfolio of product capabilities to improve everyday processes in the transportation maintenance sector.

LUBRICANTS / PENETRANTS / GREASES



45 SIDEWINDER Super Penetrant

Fast spreading, rust busting, super penetrating solvent that loosens, cleans and also offers a light film lubrication.

- 50 state compliant
- Superior penetration. Fast spreading
- Cleaning action to dissolve grease

B41801 (12 cans/cs)



Zep 45 DUAL FORCE Dual-Action Penetrant and Lubricant

Superior dual-action penetrant and lubricant with PTFE that doesn't compromise one for the other. Low odor.

- 374301 (12 cans/cs)
- 374524 (4-gal/cs)



AIR AID Air Tool Conditioner

Keeps tools lubricated and conditioned. Can be used to restore clogged tools, increase the tools RPM's or torque, and inhibit rust.

940201 (12 cans/cs)



Zep 2000 High Speed Lubricant

A clear, high-pressure lubricant with a high adhesive strength that enhances lubrication and reduces friction. It uses a unique combination of natural and

synthetic lubrication agents and PTFE that promotes penetration, even in tight areas. It then evaporates quickly, allowing set up of the grease.

416401 (12 cans/cs)



ALL PURPOSE GREASE HI TEMP

All-purpose, high-temperature multi-purpose grease that can withstand heavy impacts and pounding pressures, high temperatures, and anti-splatter.

- 312104 (10 x 14 oz cartridges)
- 312101 (40 x 14 oz cartridges)
- 312134 (45 lb pail)
- 312142 (120 lb drum)



ZEPRESERVE

Lubricant, Moisture Displacer

Penetrant, light-duty lubricant, moisture displacer, and short term corrosion preventer. A blend of solvents, mineral and silicone oils, and penetrating agents.

- 143424 (4-1 gal/cs)
- 143435 (5 gal)
- 143485 (55 gal)



LUBEZE DRILL CHILL Cutting Oil

A cutting oil that eliminates heat at its source to ensure clean, smooth cuts and prolonged tool life. It is fortified with sulfur and chlorine compounds for extreme pressure applications. Prolongs tool life.

137835 (5 gal)



ZEPRESERVE NC Lubricant and Penetrating Agent

An all-in-one aerosol lubricant, penetrating agent, moisture displacer and corrosion inhibitor. Designed to loosen nuts, bolts, fittings. Removes rust and preserves metal. Not for use on painted surfaces or rubber seals

031501 (12/cs)



PARTS WASHER



DYNA-BRUTE Large Capacity Solvent Parts Washer

Heavy-duty, industrial, automotive parts cleaner. Designed for use in industrial plants, engine repair shops, machine shops, engineering departments, transmission shops, automotive repair facilities and service stations.

- Tank has 14 to 28-gallon soaking capacity
- Multi-stage filtration system
- Certified to UL1204 Parts Washer Standard
- Meets OTC Freeboard

PW00269 (ea)



DYNA 143

Specifically designed for use in Zep Parts Washers. Safe on all metals, with a higher flashpoint of 143°F. Highly refined, odorless

solvent quickly dissolves and flushes away grease, oil, and other soils.
036635 (5 gal pail)
036685 (55 gal drum)



ZONE DEFENSE Parts Washer Solvent

Highly effective blend of petroleum and citrus terpene solvents that can be used on miscellaneous metallic parts of fuel pumps, carburetors, filters, master cylinders, valve covers, and rocker arms. Safe for use on all metals. Non-butyl, non-corrosive. No HAPS.

- J32801 (12-22 oz/cs)
- J32835 (5 gal)
- J32885 (55 gal)



FLOOR CARE & CLEANERS



PEAT SORB Dry Hydrocarbon Absorbent Powder

Loose particulate absorbent designed to neutralize and encapsulate hydrocarbon spills. Does not capture water.
962201 (2 cu ft bag)



ZORBENT Super Absorbent

An ultra-light, dust-free absorbent that holds 16 times more liquid than standard clay absorbents. Captures both water and oil.
699501 (1 cu ft bag)



SWEEPING COMPOUND Oil Based Sweeping Compound

An economical, sweeping compound for hard floors such as concrete, ceramic tile, and unfinished hardwood
230555 (250 lbs)



FLASH Heavy-Duty Concrete Cleaner

A powdered concrete floor cleaner that rapidly penetrates and lifts dirt, grease and grime from the pores of concrete and masonry floors.
072333 (40 lbs)
072380 (500 lbs)

RESTROOM/
LOCKER ROOM

HAND CARE



GLOVE Soil Skin Shield

A ready-to-use, water-based, soil skin shield which prevents the penetration of grease and soil into the hands. It acts as an invisible glove which prevents grease and other soils from penetrating into the natural pores and creases of the skin.

338901 (12-1 qt/cs)



CHERRY BOMB HAND CLEANER TOWELS Heavy-Duty Hand Cleaner - Now thicker and stronger

An industrial-strength, abrasive, hand cleaner towel designed to scrub away tough soils. Removes stubborn industrial soils such as grease, tar, carbon, asphalt, inks, resins, paints and adhesives.

346601 (130 towels - 4 tubs/cs)



INSTANT HAND SANITIZER GEL

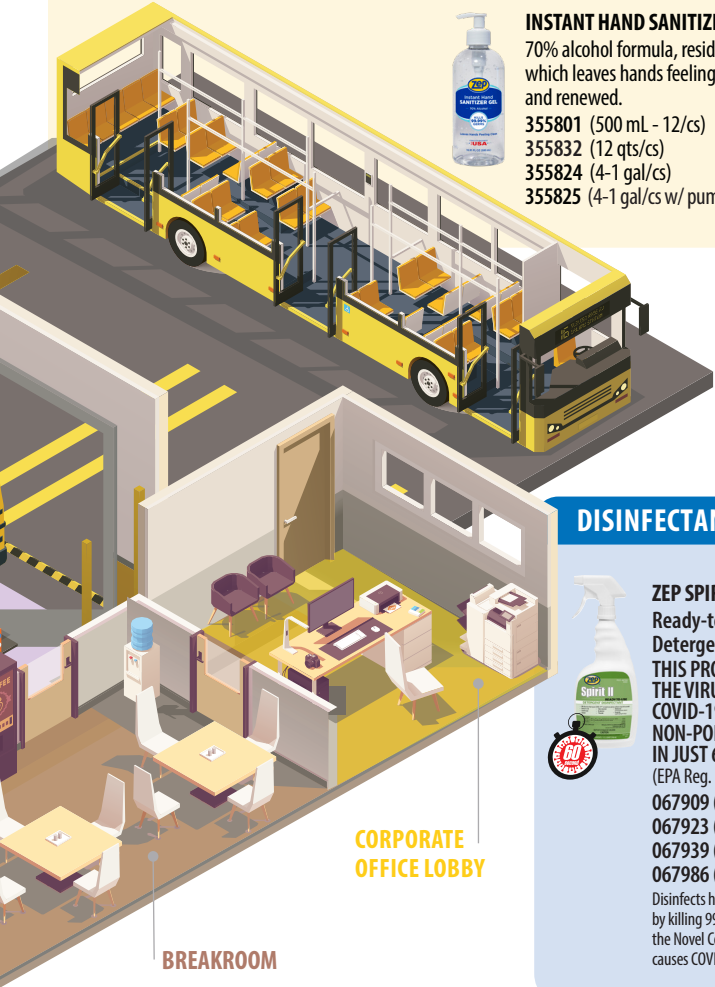
70% alcohol formula, residue-free which leaves hands feeling fresh and renewed.

355801 (500 mL - 12/cs)

355832 (12 qts/cs)

355824 (4-1 gal/cs)

355825 (4-1 gal/cs w/ pumps)



CORPORATE
OFFICE LOBBY

BREAKROOM

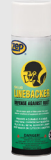
PROTECTANTS



GOOD STUFF Vinyl, Rubber, Plastic Protectant

Water-based vinyl, rubber, and plastic protectant for use on vehicle interiors, luggage, handbags, sporting goods, rubber handrails, and more. This product will beautify, penetrate and protect surfaces from UV rays, ozone, and oxygen which can crack, harden or dull surfaces.

912501 (12 cans/cs)



LINEBACKER Corrosion Protectant

Ready-to-use long-term corrosion protection film in a solvent-based aerosol form. It dries to a durable, flexible and non-tacky film. The coating can be easily removed with a safety solvent degreaser when desired. Provides an impenetrable film barrier which protects against corrosion, resists heat, rain, snow, salt water and many corrosive industrial atmospheres

868101 (12 cans/cs)



FORMULA 166 Exterior Protective Coating

Long-lasting exterior protective coating forms a hard, clear acrylic film. Unaffected by weather, acids, or alkalis. Water repellent. Used to brighten and restore the appearance of re-manufactured auto engines and parts. Recommended as a coating to prevent adhesion of cement to ready-mix truck surfaces. Will not yellow over time. Seals metal surfaces and paints from the corrosive effects of wind, water, air, salts, acids, and alkalis.

142935 (5 gal pail)



RUSTARRESTER Protective Coating

Chemically converts existing rust and corrosion into a moisture-free, black protective coating. The resulting surface is then ready for painting or other treatment without additional priming. Water-based. Non-flammable. USDA applicable, P1.

146824 (4-1 gal/cs)

DISINFECTANTS & SANITIZERS



ZEP SPIRIT II
Ready-to-Use
Detergent Disinfectant
**THIS PRODUCT KILLS
THE VIRUS THAT CAUSES
COVID-19** ON HARD
NON-POROUS SURFACES
IN JUST 60 SECONDS!**

(EPA Reg. No. 1839-83-1270)

067909 (12 qt/cs)

067923 (4-1 gal/cs)

067939 (5 gal pail)

067986 (55 gal drum)

Disinfects hard non-porous surfaces by killing 99.9%* of SARS-CoV-2 the Novel Coronavirus that causes COVID-19**



ZEP AVIATION RTU CLEANER DISINFECTANT

Ready-to-Use,
Non-Streaking Cleaner
**THIS PRODUCT KILLS THE VIRUS
THAT CAUSES COVID-19** ON
HARD NON-POROUS SURFACES
IN JUST 60 SECONDS!**

(EPA Reg. # 6836-152-1270)

H02501 (12-1 qt/cs)

H02524 (4-1 gal/cs)

H02535 (5 gal pail)

H02585 (55 gal drum)

H02589 (275 gal tote)



APRIZA 2

A concentrated, all-purpose hard surface cleaner and sanitizer fortified with peroxide and specifically designed for all light to heavy-duty cleaning tasks. Low pH product and contains no harsh solvents, complies in all voc-regulated areas.

(EPA Reg. No. 6836-78-1270)

125124 (4-1 gal/cs)

125135 (5 gal pail)

DEGREASERS



A-ONE Heavy-Duty Industrial Cleaner & Degreaser

A concentrated, extra heavy-duty industrial cleaner with wetting agents, and oil dissolving solvents.

- Cleans concrete and masonry, brick, tile, and most industrial and institutional surfaces.

- Low foam formula - ideal for use in automatic floor machines
- Ideal for cleaning fire/smoke damage

126924 (4-1 gal/cs)

126935 (5 gal pail)

126985 (55 gal drum)

126989 (275 gal tote)



MORADO SUPER CLEANER Heavy-Duty, Multi-Purpose Cleaner & Degreaser

Concentrated, multi-purpose, economical cleaner and degreaser for extra-heavy-duty industrial cleaning applications. Effective on greasy and carbonaceous soils.

085624 (4-1 gal/cs)

085635 (5 gal pail)

085685 (55 gal drum)

085689 (275 gal tote)



BIG ORANGE Citrus Solvent Degreaser

Organic, non-petroleum-based cleaner, degreaser, and deodorizer. Ideal for use in drain pipes, grease traps, sewage treatment plants, rendering plants, refuse dumps, trash cans and dumpsters. Also removes many industrial-strength glues/adhesives and protective coatings and emulsifies tar and asphalt.

- Natural citrus solvents with no caustics, acids, or distillates

- Generates no harmful vapors

011401 (12 cans/cs)

041501 (12-1 qt/cs)

041524 (4-1 gal/cs)

041535 (5 gal pail)

041585 (55 gal drum)





EXPERTISE THAT PARTNERS WITH YOU

ZEP D-4000 SYSTEM

Hand Care Dispensing Solutions



D-4000 PLUS GALLON DISPENSER

Rugged stainless steel dispenser with reinforced nylon housings. Designed to take the abuse of industrial or other heavy use environments.

- Dispenses from the top - means no spilling
- 4 position adjustment controls the amount being dispensed

600101 (ea)



CHERRY BOMB – HEAVY-DUTY HAND CLEANER WITH ABRASIVE



- Solvent formula that spreads, captures and holds grease
- Contains pumice to scrub away tough soils
- Enriched with emollients, leaving hands clean and comfortable
- Classic cherry fragrance

095124 (4-1 gal/cs)

*LOW VOC VERSION AVAILABLE - #329124



TKO – HEAVY-DUTY CHAMPION OF THE WORLD HAND CLEANER

- Super heavy-duty, non-solvent hand cleaner
- Pumice cuts through dirt, grease and grime
- Pleasant lemon-lime scent

R54824 (4-1 gal/cs)



SHELL SHOCK – HEAVY-DUTY SOY-BASED CLEANER



- Natural, soy-based solvent
- Removes stubborn soils
- Natural walnut shell abrasive
- Enriched with emollients, leaving hands clean and comfortable
- Spiced apple fragrance

318524 (4-1 gal/cs)



ORIGINAL ORANGE – INDUSTRIAL HAND CLEANER

- An industrial-strength hand cleaner that combines the degreasing power of natural citrus solvents with the scrubbing action of pumice.

302824 (4-1 gal/cs)

MODEL D-4000 LOCKING PLATE

For use with the D-4000 Dispenser where security is a concern.

- Eliminates unauthorized removal

667401 (ea)



ONE GALLON BOTTLE PUMP

Recommended for use with hand soaps, disinfectants, and dish washing products.

- Dispenses one ounce per stroke
- Fits all regular and flat shelf one gallon bottles

666901 (ea)



ZEP D-1000 SYSTEM

Hand Care Dispensing Solutions



D-1000 WALL-MOUNT DISPENSER

Rugged stainless steel dispenser with reinforced nylon housings. Designed to take the abuse of industrial or other heavy use environments. Dispenses from the top—means no spilling

667301 (each)



D-1000 LOCKING PLATE

Eliminates unauthorized removal

SKU# 666601 (each) sold separately



ACCLAIM AB – ANTIBACTERIAL HAND SOAP

Thick liquid, antibacterial hand soap

- Acts to effectively remove soils and inhibit bacteria
- Mild on the hands

SKU# 314901 (12 quart/cs)



F.S ANTIMICROBIAL HAND CLEANER

An E2 rated hand cleaner and sanitizer

- Contains emollients and conditioners for extra mildness to the hands

SKU# 092001 (12 quart/cs)



INSTANT HAND SANITIZER GEL

70% alcohol formula kills 99.99% of germs

- Residue-free leaves hands feeling clean
- Light, clean scent so hands smell fresh and renewed

SKU# 355832 (12 quart/cs)

ZEP SHURFILL FILLING STATION

Use All Your Favorite Zep Products In Bulk

- 55 gal drum = 450 cans (15oz)
- Helps reduce product waste
- Eliminate up to 5400 cans annually from waste stream
- No lids, straws, or corrugate box waste



SHURFILL PRESSURE FILL SYSTEM

Bulk Solvent Dispensing System

- Built-in grounding cable for safety
- Convenience of aerosol dispensing with cost savings of a bulk product
- May be used with 5, 20 and 55 gallon product sizes
- Eliminates up to 5,400 cans per year from waste stream

L90801 (ea)



DURA SHOT S

Heavy-Duty Compressed Air Sprayer

- Use for both solvent and water based products
- Lightweight anodized aluminum reduces fatigue

Caution: Do not use with acids or caustic water-based products

SPO0228S (ea)